

# DISTANCE



ISBN 978-1-905527-26-7

SHEPLEY & McCLENAGHEN



THE AVENUE GALLERY, NORTHAMPTON, 19 APRIL - 07 MAY

This exhibition comprising assemblages and collages, photographs and drawings, shows new work by UK artists Alec Shepley and John McClenaghan. John and Alec last showed together in a joint exhibition entitled 'Seeing Walls' in 2006 at the Vanguard Gallery in Shanghai and 'Distance' is the result of their continuing long-distance artistic conversation.

The presentation of the fragmented work and the presence of dilapidation is tangible in much of their artistic practice. However much of this work focuses on the positive aspects of ruin – on a thing that might be coming into being as opposed to being left to decay. There is evidence of a preoccupation with cutting, placing, re-cutting and re-placing, joining and unjoining, in the collages/assemblages and one look inside either artist's workshops would reveal an almost neurotic disruption of the 'outcome' – telescoping between making and un-making. Could the 'works' themselves be ruins – failing in a way to remain intact? Any reading of the 'complete picture' is disrupted and we are afforded only partial, distanced view – the artwork/viewer/location relationship is interrupted through a provisionalised engagement – meaning and function are unstable. The pre-occupation with fragmentation and the temporary artwork; cutting and rejoining; doing and un-doing; building and un-building, are attempts to reveal 'spaces of potential' – perhaps to prise open and invite occupation of the 'joins' or gaps themselves.















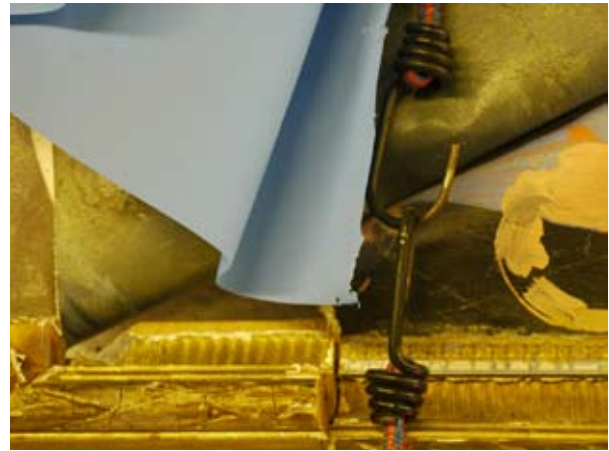


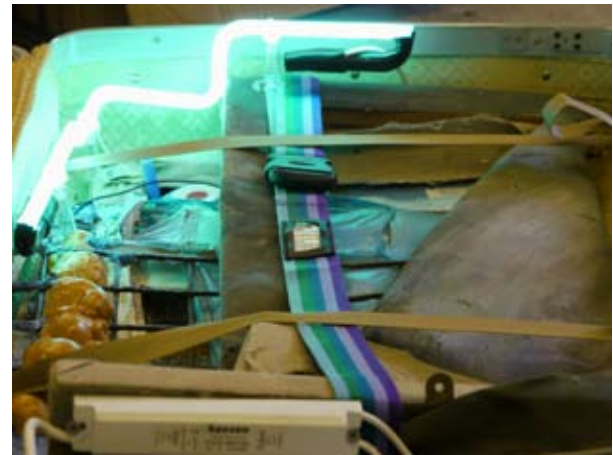




























PAGE	TITLE
06	From a series of untitled wall drawings, 2009-
08	Untitled assemblage, 2001-09
10	Untitled tableau, 2009-10
12, 14	Untitled assemblage, 2001-09
16, 18	Fiasco, 1998-2010
20, 22	Untitled assemblage, 2001-09
24, 26	Wound, 2001-10
28	Residue, 2001-10
30, 32	Fall, 2001-10

Photography by Alec Shepley & John McGlenaghan.  
 Designed & produced by The Beehive Press, Lincoln.  
 Edition of 100 copies, April 2010

All rights reserved. No part of this publication may be reproduced or transmitted in any form or by any means, electronic or mechanical, including photocopy, recording or any other information storage and retrieval system, without prior permission in writing from the publisher.

ISBN 978-1-905527-26-7

Printed and published by The Beehive Press at the University of Lincoln. With special thanks to Tom Dunne

For further information see, standing in the ruins, at: [www.alecshepley.org.uk](http://www.alecshepley.org.uk)

